



INDOFINE Chemical Company, Inc.

121 Stryker Lane, Bldg. 30, Suite 1 • Hillsborough, NJ 08844 • U.S.A.

Phone: (908) 359-6778 • FAX: (908) 359-1179

website: www.indofinechemical.com

e-mail: chemical@indofinechemical.com

CERTIFICATE OF ANALYSIS

Catalog Number: 06-725

Product Name: **ISOALANTOLACTONE**
(Isohelenin)

CAS Number: [470-17-7]

Lot Number: 1901182

Chemical Formula: C₁₅H₂₀O₂

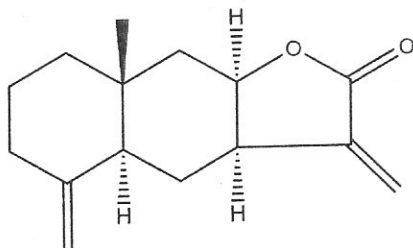
Molecular Weight: 232.32

Appearance: Off-white powder

Loss on Drying: 0.87%

Storage: Store in a cool, dry place

Purity(HPLC): 99.20%



Prepared by:
Ramesh Mandadi
Ramesh Mandadi
Director of Operations

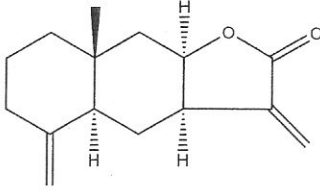
Reviewed and approved by:
Sujata Moton
S. Moton
VP



INDOFINE Chemical Company, Inc.

121 Stryker Lane, Bldg. 30
Hillsborough, NJ 08844 USA
Phone: (908) 359-6778; Fax: (908) 359-1179

HPLC ANALYSIS

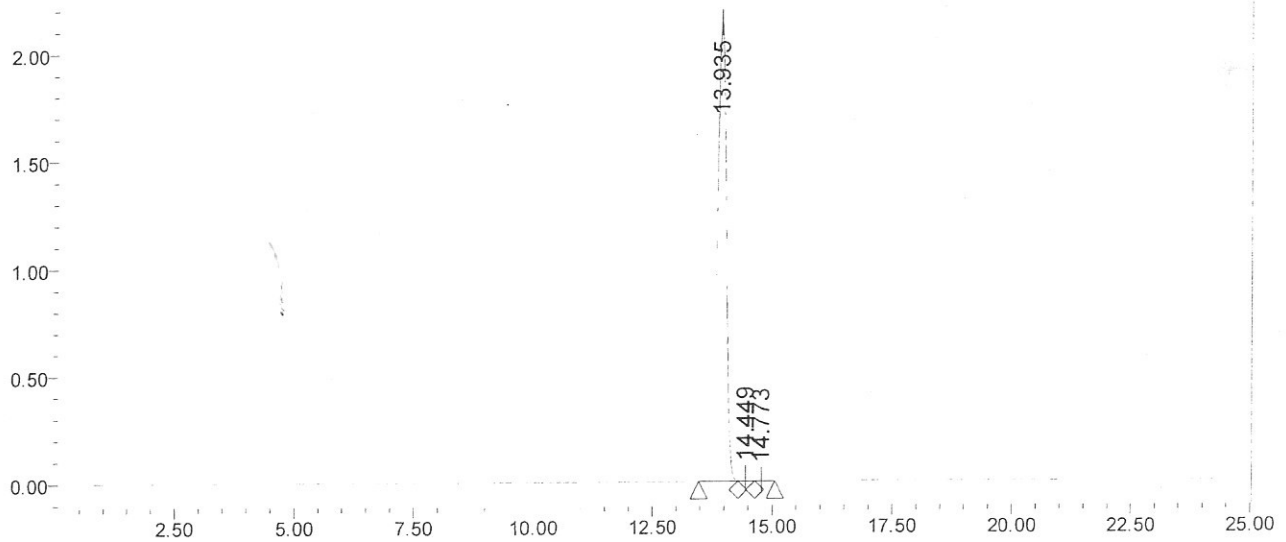


Catalog No.: 06-725
Product Name: Isoalantolactone
Lot No.: 1901182

SAMPLE INFORMATION

Sample Name:	Isoalantolactone	Acquired By:	System
Sample Type:	Standard	Sample Set Name:	
Vial:	73	Acq. Method Set:	Isoalantolactone
Injection #:	1	Processing Method:	Samples
Injection Volume:	7.00 ul	Channel Name:	205.0nm
Run Time:	25.0 Minutes	Proc. Chnl. Descr.:	PDA 205.0 nm

Auto-Scaled Chromatogram



Peak Results

	RT	Area	% Area	USP Plate Count	USP Resolution
1	13.935	27947035	99.20	27614.77	
2	14.449	172180	0.61	21003.53	1.29
3	14.773	51796	0.18	20460.48	

Prepared by:
Ramesh Mandadi
Ramesh Mandadi
Director of Operations

Reviewed and Approved by:
Sujata Moton
Sujata Moton
VP